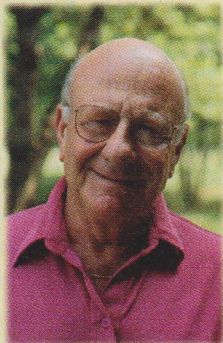


# Farm Science Review Hall of Fame



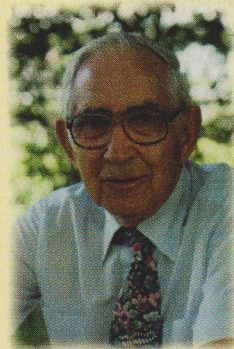
■ The Farm Science Review Hall of Fame was established in 1990 to recognize outstanding contributions to the Farm Science Review. Inductees are permanently recognized at both the Molly Caren Agricultural Center and the Agricultural Administration Building on Ohio State University's main campus. Congratulations to this year's inductees.

**C.L. "Lep" Lephart** was employed by International Harvester Company Inc. in 1962 during the planning of the first Review. "Lep" was responsible for IHC's original participation in 1963, and retains set-up responsibilities. Through his many travels, "Lep" continues to be a loyal promoter of the Review. Retired since 1989, he devotes his personal time to Review programs and has contributed to the Dale T. Friday Scholarship Fund.



**Dorothy R. Friday** was a Review volunteer for 18 years. She spent most of her evenings and weekends doing various secretarial tasks. She served as a receptionist in the Headquarters, and helped maintain the grounds. Dorothy was a major donor to the Dale T. Friday Scholarship Fund and remains a loyal Review supporter. She also is an active member of the Worthington Historical Society and the Worthington Methodist Church.

**Paul C. Leidheiser** retired in 1980 as assistant director of the Ohio Cooperative Extension Service. He served on the first Review Conservation Committee and later became assistant to the treasurer. He has been a volunteer for the Emeriti Information Group, and supported the Review by helping former student employees find jobs. For Paul and his wife Elsie, commit-



ment to the Farm Science Review runs in the family. Their four sons have all been part of the Farm Science Review student crew. All four are active members of the Farm Science Review Alumni Association, and two have served as officers on the Board of Governors. Paul was a donor to the Dale T. Friday Scholarship Fund.

## Previous inductees

**1993:** Thomas M. Stockdale, Ted L. Jones, William L. George

**1992:** Earl W. McMunn, Roland L. Leeper, James W. Yingling

**1991:** William B. Zipf, Wilbur A. Gould, Shirley A. Brooks, Marion E. Grimes

**1990:** Molly Caren, Novice G. Fawcett, Dale T. Friday, Roy M. Kottman, Thomas F. Wonderling